

Kevin Feltham

EXPERIENCE - Over the past 16 years' as county councillor, including the Cabinet, I have been privileged to help many people. I would be honoured to continue representing the Gartree Division. I am also involved in local issues as parish councillor, Governor at Robert Smyth Academy and member of a Neighbourhood Plan Group. My reputation as a campaigner has seen notable successes with public support over the years (we prevented the 15,000 house eco-town north of Great Glen, we are fighting to improve air quality on A6, and we are working to retain the 747 bus service). Close working with local Conservative MPs and district councillors means joined up support for people across the division.

PERSONAL - Born and educated locally, my professional life has been in healthcare so I am very concerned by the threat to the children's heart unit at Glenfield Hospital. My amateur interest in local history included researching information for The Story of England with Michael Wood for his BBC TV series.

Gartree Division

Vote Feltham

May 4th 2017

Conservatives

@kevin_feltham

<http://gartree.yourcillr.com>

Gartree Division
Vote Kevin Feltham
May the 4th be with us all!



Unveiling a Green Plaque for General Jack



Helping out at a Neighbourhood Plan event



Campaigning against a wind turbine

WE'VE KEPT COUNCIL TAX INCREASES BELOW INFLATION FOR THE LAST 4 YEARS

With our sound financial management & by cutting waste, we can continue to keep Council Taxes as low as possible!



Our Record

We made promises AND stuck to them!

Managed £33m Superfast Broadband project to every community.

We delivered ✓

Protected budgets for vulnerable children and adults.

We delivered ✓

Achieved better integrated NHS and social care services.

We delivered ✓

Campaigned for better funding - securing £60m extra for our schools.

We delivered ✓

Transformed the way we deliver or commission our services, delivering £135m savings and repaying £46m debt.

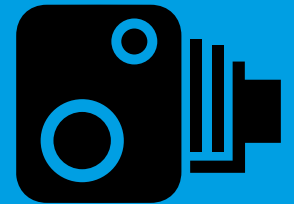
We delivered ✓



We promise to...



Fight excessive housing development



Do what communities and villages are asking for with a new policy of Community Speed Enforcement

Keep council tax increases as low as possible

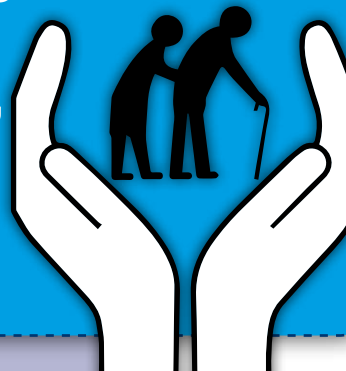


Have the best performing schools giving children every chance to succeed at every Key Stage



Invest in our highways and transport networks

Increase integration between NHS and social care services, safeguarding the most vulnerable adults and children



Work with our MPs to fix the broken system of local funding - delivering a fairer, needs-based funding formula for our schools and local communities